

**DOCUMENT 00 90 00**  
**ADDENDUM**

**ADDENDUM NO. [1]**                      **Date: June 30, 2022**

**RE:                      CITY OF ABBOTSFORD CONCESSION STAND & PRESS BOX**  
**407 W. HEMLOCK ST.**  
**ABBOTSFORD, WISCONSIN 54405**  
**PROJECT NO. 22002**

**FROM:                 HSR Associates, Inc**  
**100 Milwaukee Street**  
**La Crosse, WI 54603**  
**(608) 784-1830**

**To:     Prospective Bidders**

This addendum forms a part of the Contract Documents and modifies the original Bidding Documents dated June 2022. Acknowledge receipt of this Addendum in the space provided on the bid form. Failure to do so may subject the Bidder to disqualification.

This Addendum consists of [2] pages, and [1] 30 x 42 drawing.

**CHANGES TO DRAWINGS**

1. Sheet P000: NOTES AND SCHEDULES

- a. See the narrative, immediately below, describing revisions to the sheet.
- b. In the Materials Specifications schedule replace Urinal (UR-1) with the following:
  - URINAL (UR-1):
    1. CHINA: AMERICAN STANDARD, KOHLER, MANSFIELD, SLOAN, ZURN. KOHLER HIGH-EFFICIENCY BARDON K-4991-ET WALL MOUNTED, WASHOUT URINAL, 3/4" TOP SPUD, 14" EXTENDED RIM, VITREOUS CHINA.
    2. FLUSHOMETER VALVE: SLOAN "ROYAL" NO 186-1.0 WITH: DUAL FILTERED BY-PASS; DIAPHRAGM, HANDLE PACKING, STOP SEAT AND VACUUM BREAKER OF MOLDED PERMEX RUBBER COMPOUND FOR CHLORAMINE RESISTANCE; ADA COMPLIANT OSCILLATING NON-HOLD-OPEN HANDLE; VANDAL RESISTANT STOP CAP; CAST SET SCREW WALL FLANGE.
    3. MOUNT RIM 24" ABOVE FLOOR.
  
  - URINAL (UR-2):
    1. AS SPECIFIED FOR UR-1 EXCEPT MOUNT RIM 16" ABOVE FLOOR.
- c. In the Materials Specifications schedule replace Water Closet (WC-1) with the following:
  - WATER CLOSET (WC-1):
    1. CHINA: AMERICAN STANDARD. KOHLER, MANSFIELD. SLOAN, ZURN. KOHLER "KINGSTON" NO. K-84325 WALL HUNG, FLUSHOMETER VALVE TYPE, VITREOUS CHINA, SIPHON JET FLUSHING, ELONGATED BOWL, 1-1/2" TOP SPUD, 2 1/4" PASSAGEWAY. 11" X 8 1/4" WATER SURFACE.

2. FLUSHOMETER VALVE: SLOAN 'ROYAL\* NO. 111-1.6 WITH: DUAL FILTERED BY-PASS; DIAPHRAGM. HANDLE PACKING. STOP SEAT AND VACUUM BREAKER OF MOLDED PERMEX RUBBER COMPOUND FOR CHLORAMINE RESISTANCE; ADA COMPLIANT OSCILLATING NON-HOLD-OPEN HANDLE; VANDAL RESISTANT STOP CAP: CAST SET SCREW WALL FLANGE.
3. SEAT: KOHLER. AMERICAN STANDARD. BEMIS. BENEKE. CENTOCO, CHURCH. OLSONITE. BEMIS NO. 1655SSCT WHITE. OPEN FRONT, EXTRA HEAVYWEIGHT. INJECTION MOLDED SOLID PLASTIC SEAT LESS COVER. EXTERNAL CHECK HINGE WITH DOUBLE SIDED GASKET/TAPE AND 'STATITE\* FASTENING SYSTEM.
4. SUPPORT: J. R. SMITH, JOSAM, WADE. WATTS, ZURN. J.R. SMITH FIG. 0532F OR 0532FY COMPACT VERTICAL CENTER LINE TYPE, SINGLE. CAULKOR NO-HUB CONNECTIONS. M12 EXPOSED FLUSH VALVE SUPPLY SUPPORT. NIPPLE LENGTH AS REQUIRED. 3" SIZE CONNECTION.
5. MOUNT RIM 15" ABOVE FLOOR.

WATER CLOSET (WC-2):

1. AS SPECIFIED FOR WC-1 EXCEPT MOUNT RIM 18\* ABOVE FLOOR.
2. Sheet S200: FRAMING PLAN - 30" X 42"
  - a. See the revised sheet included in this addendum. Disregard the previous version.
  - b. Add Masonry Wall Vertical Reinforcement Legend to the sheet.
  - c. Revise three masonry wall reinforcement marks clouded on north side of 1/S200.

**PRIOR APPROVALS**

1. Section 08 33 13 Coiling Counter Doors
  - a. CornellCookson is an acceptable manufacturer.
2. Section 08 36 13 Sectional Doors
  - a. Clopay is an acceptable manufacturer.

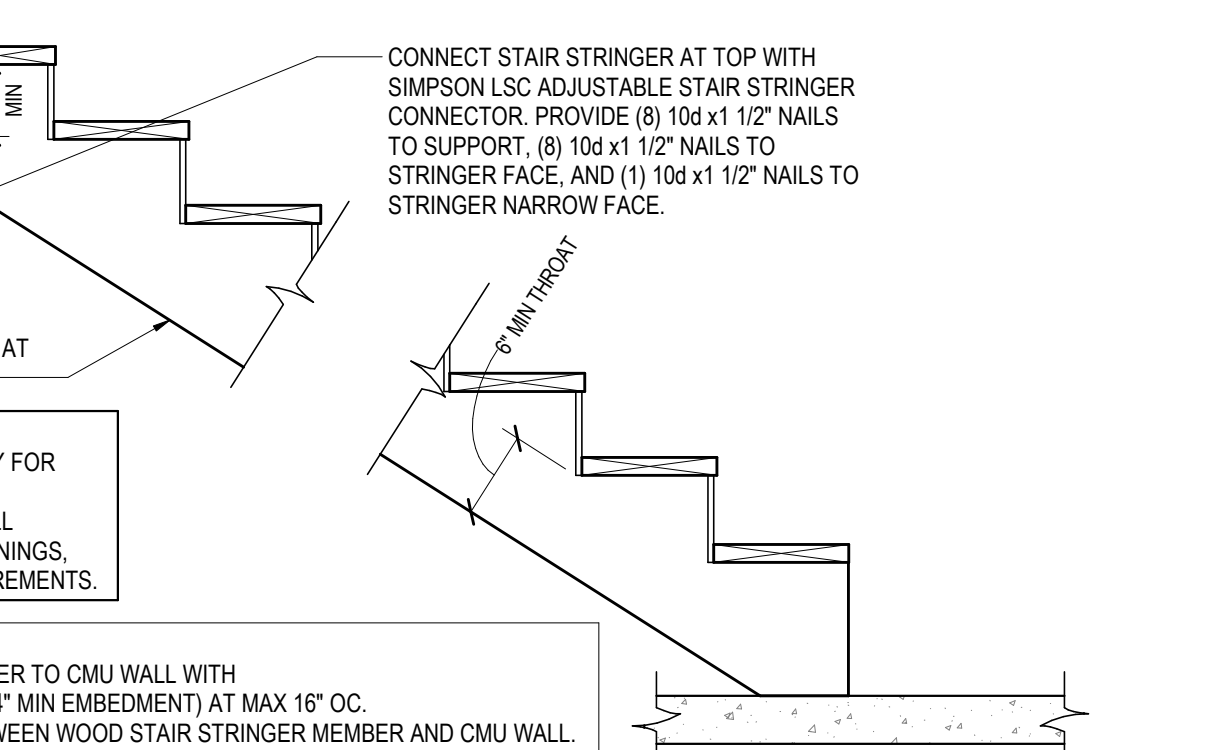
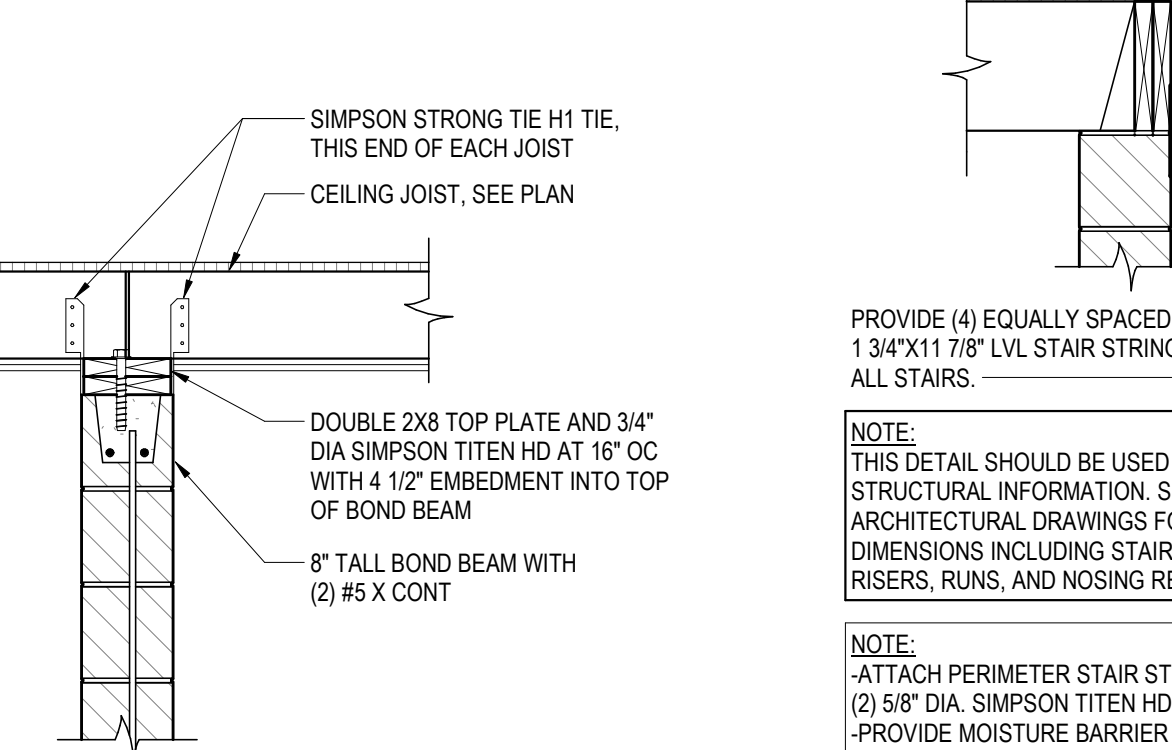
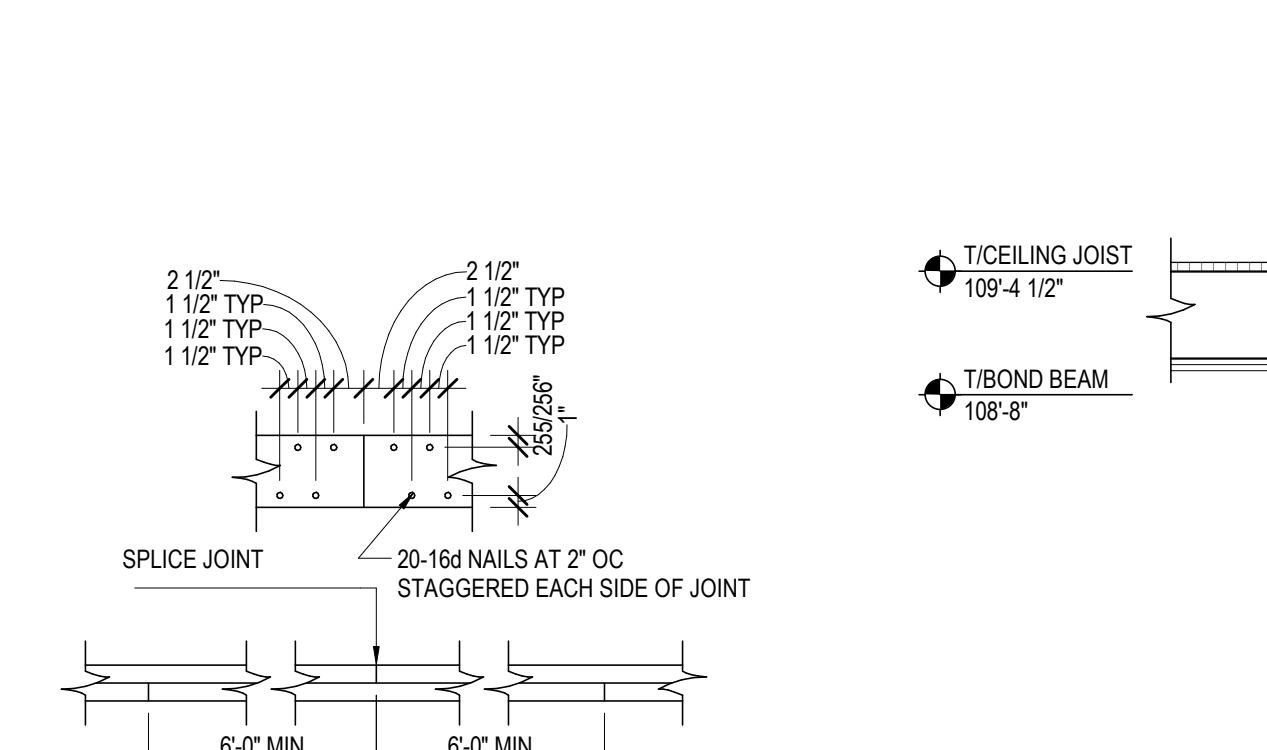
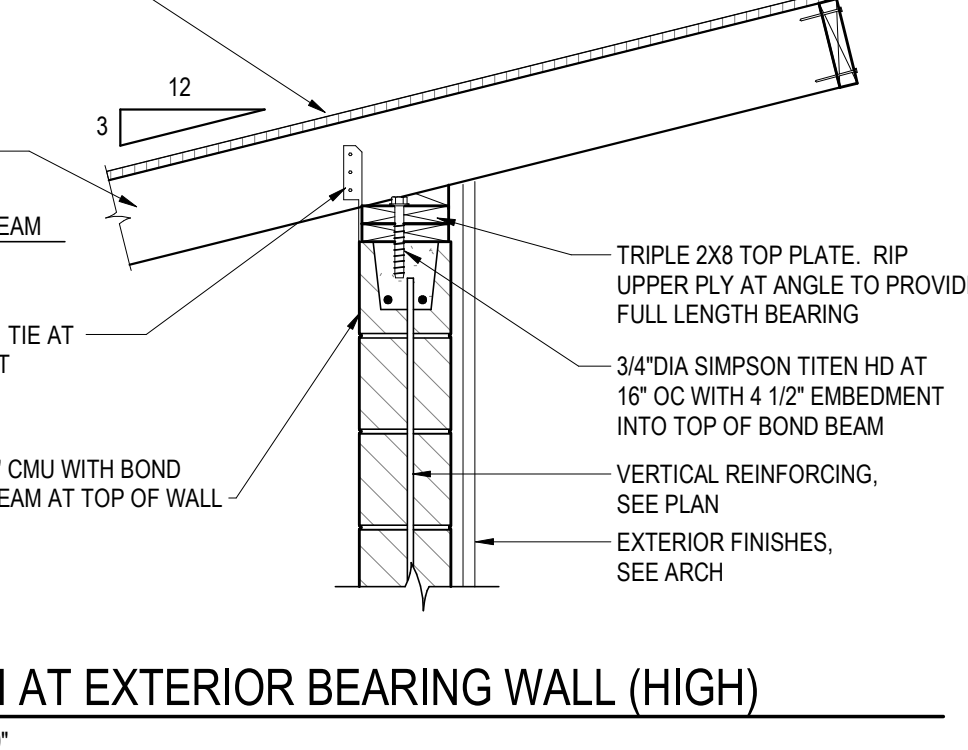
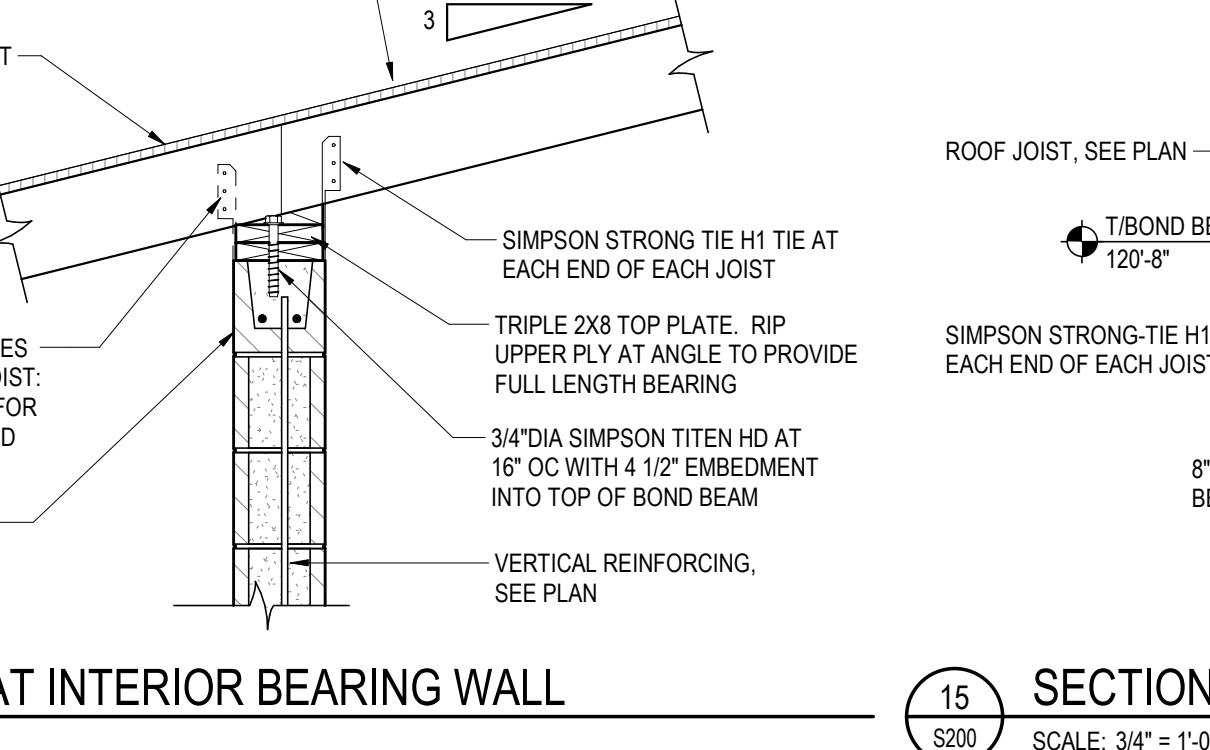
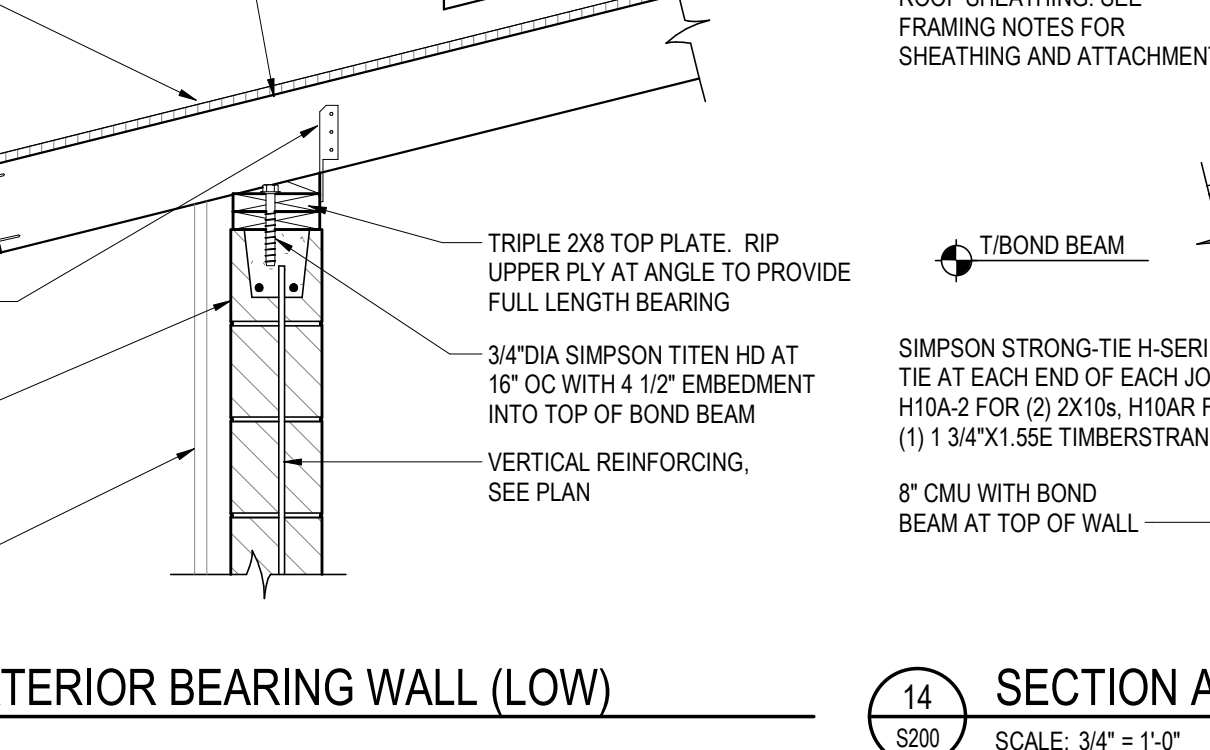
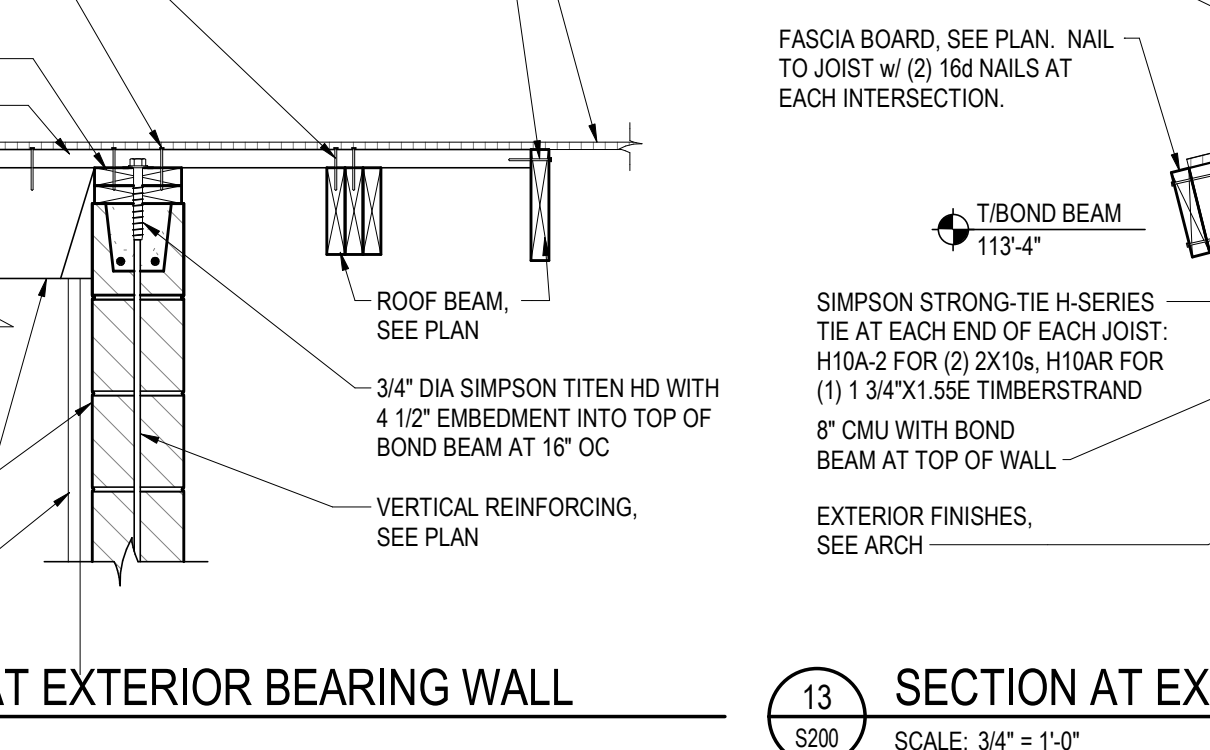
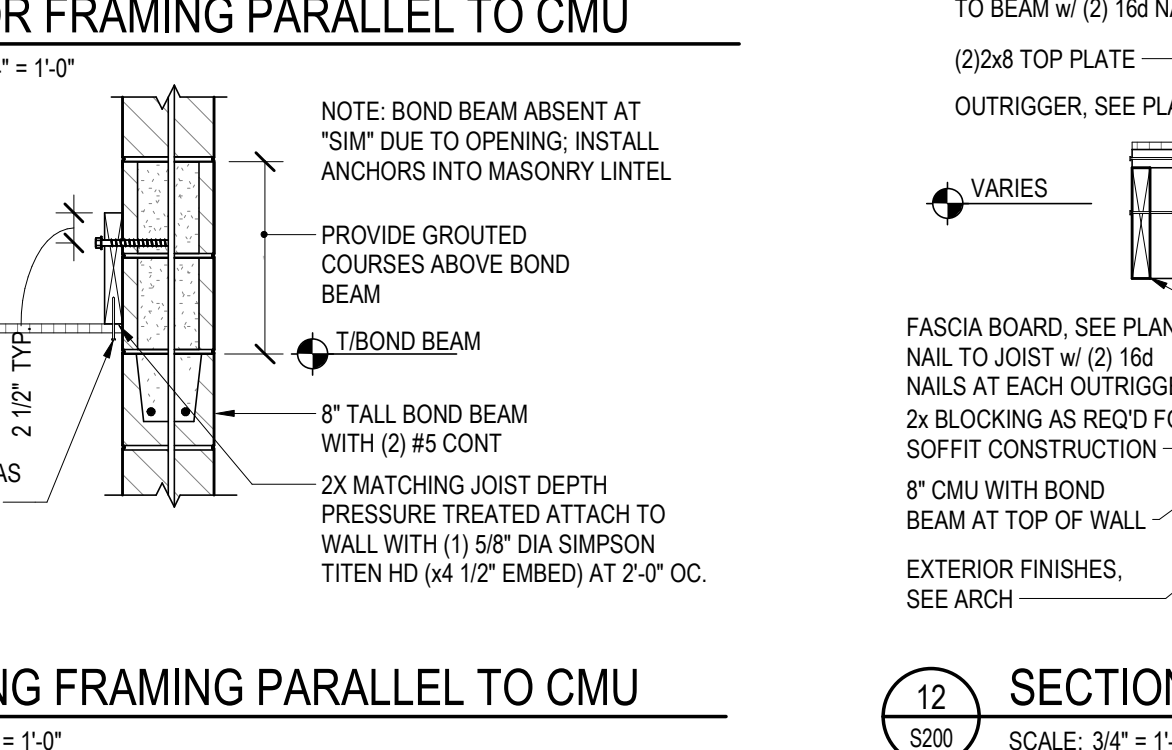
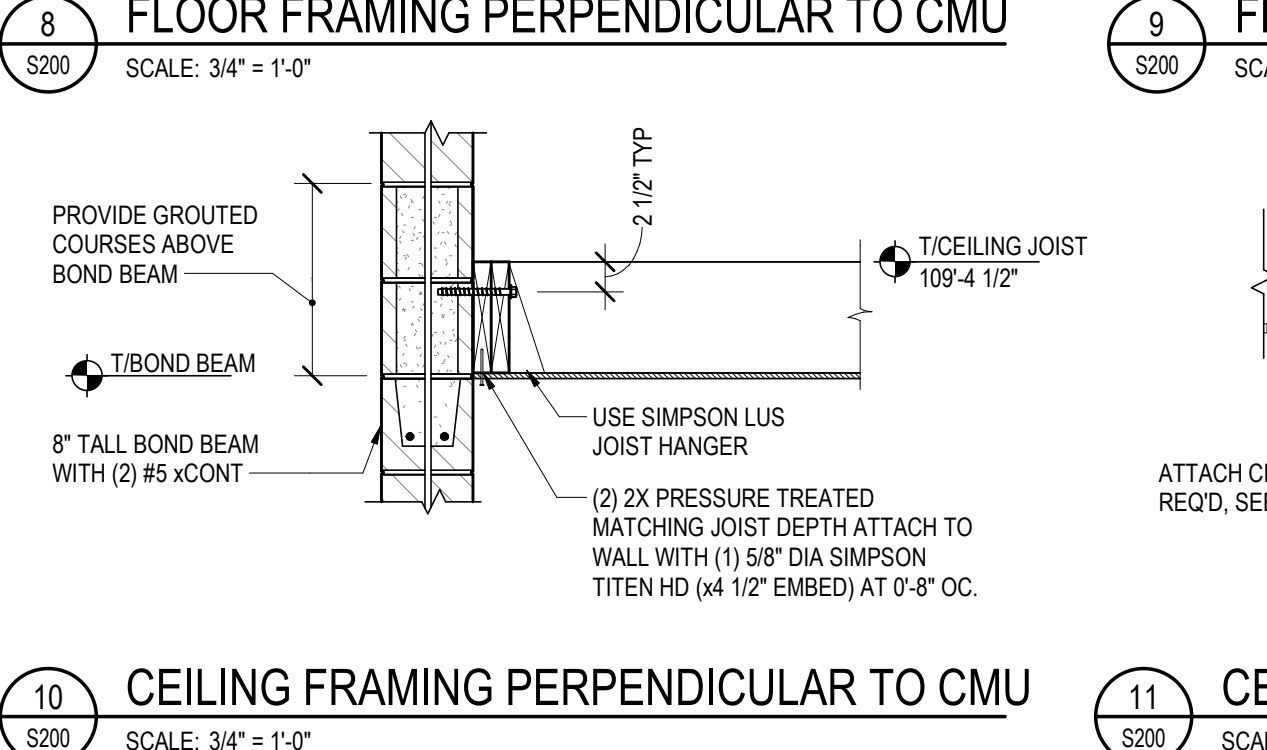
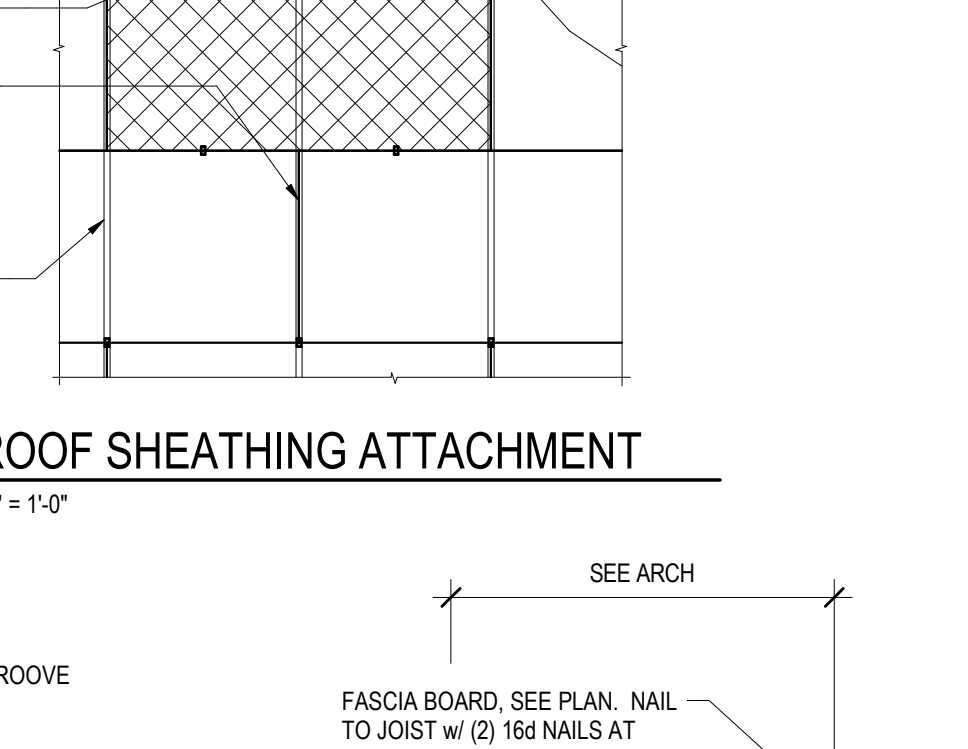
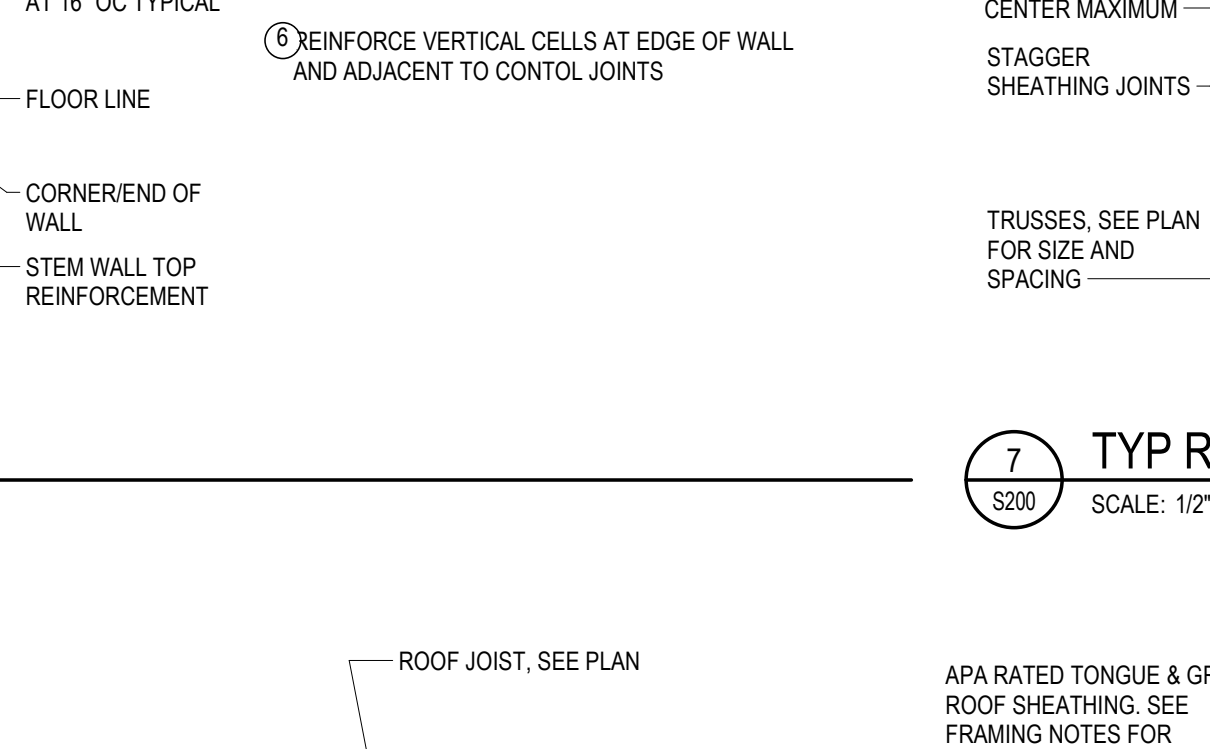
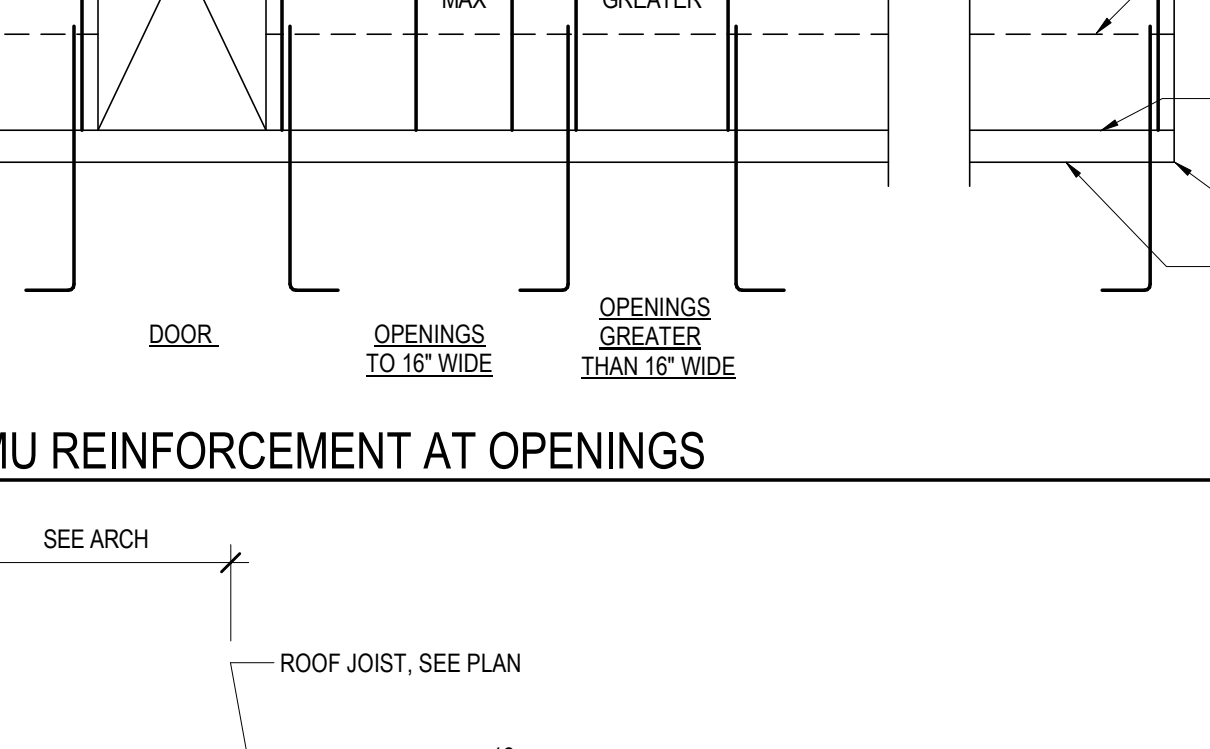
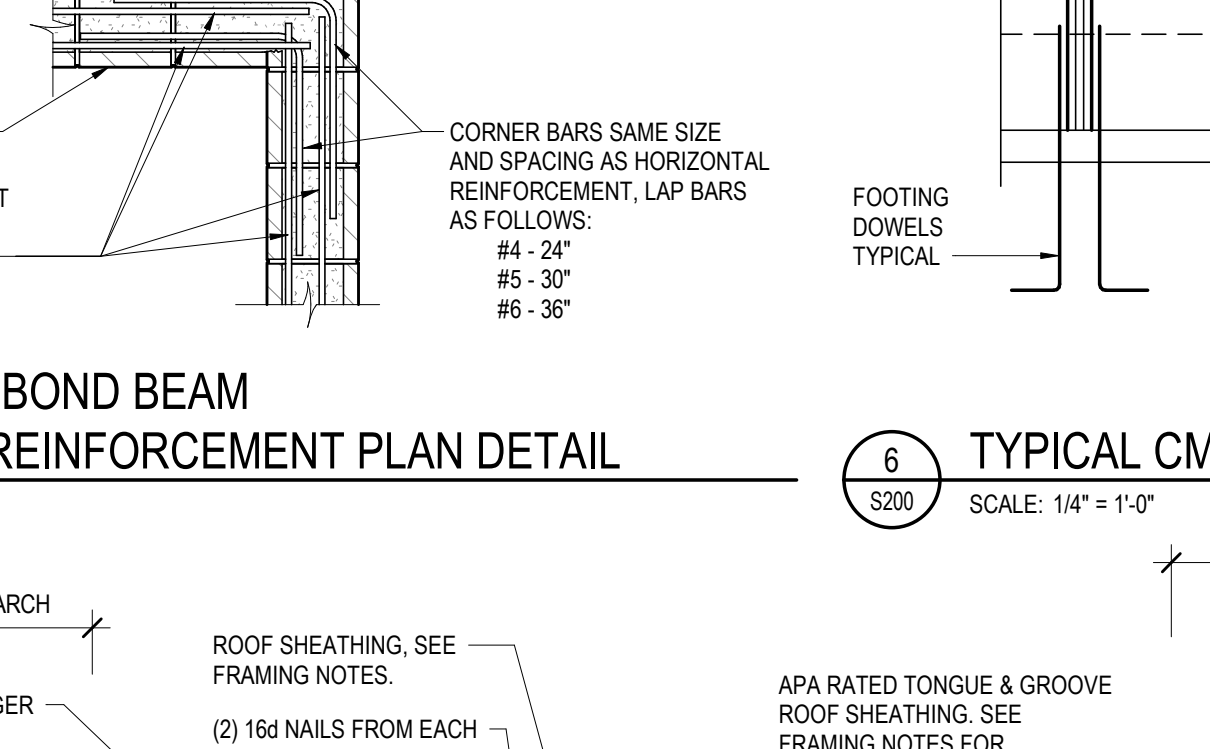
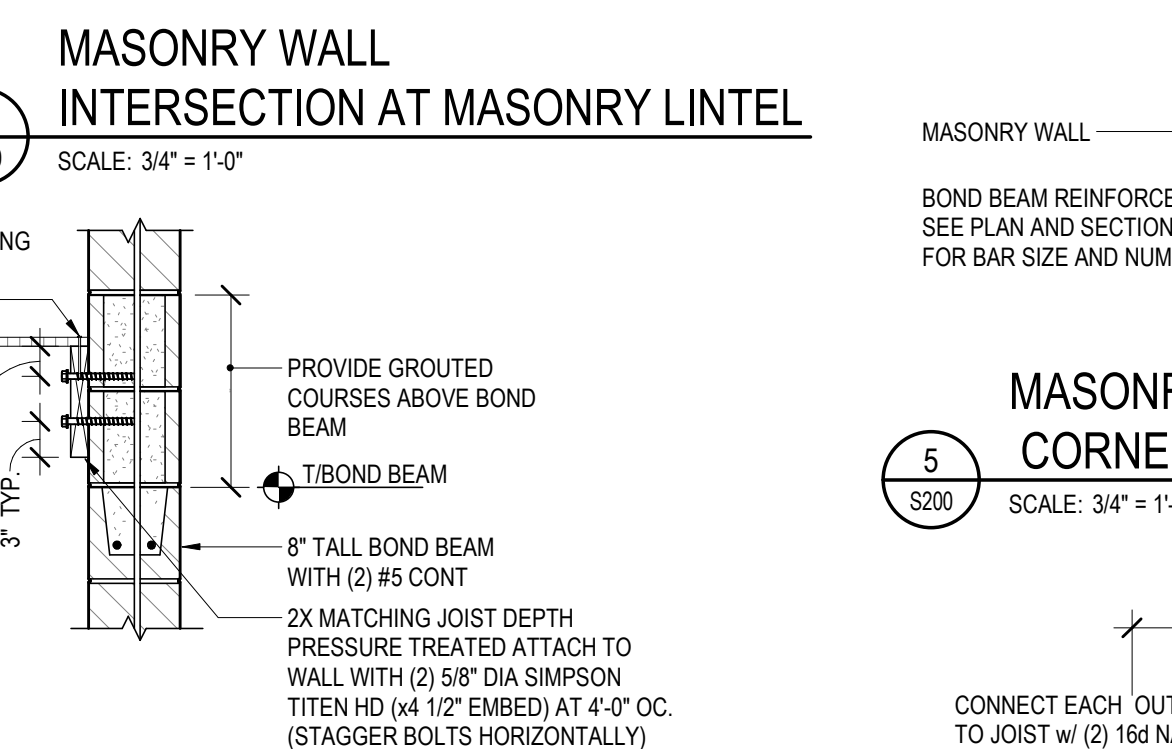
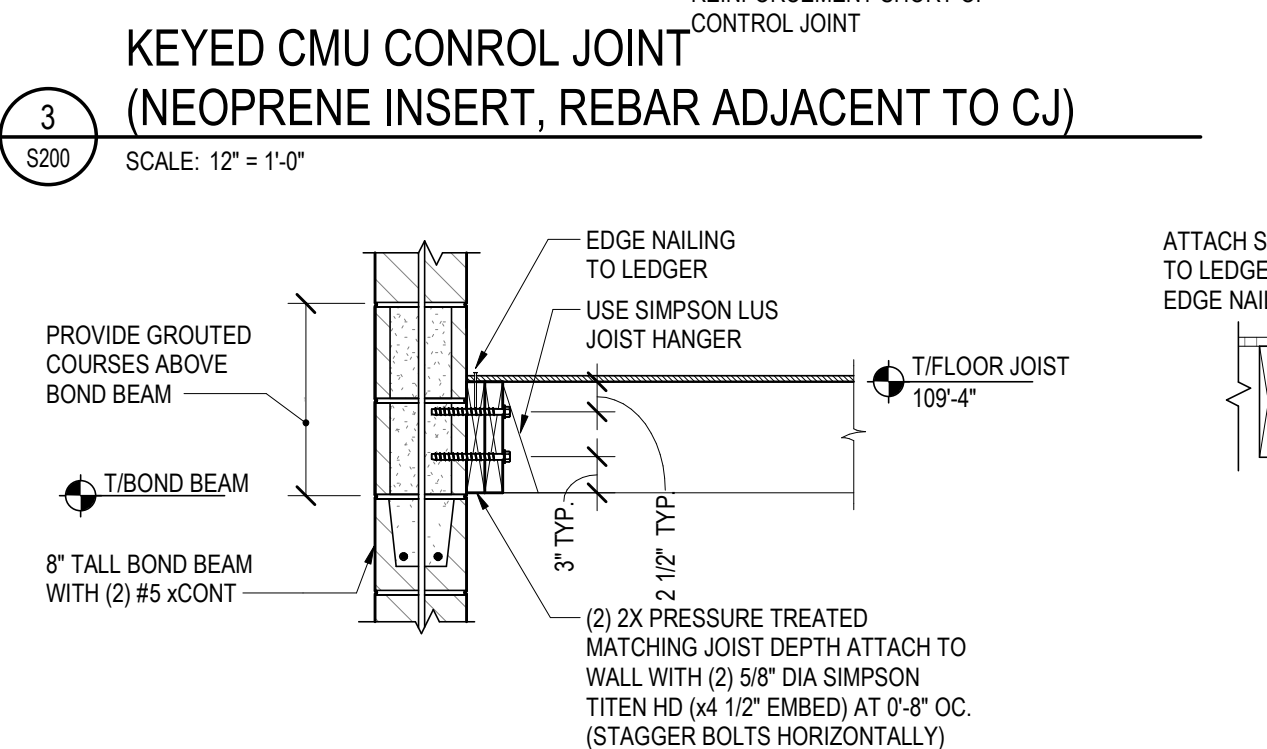
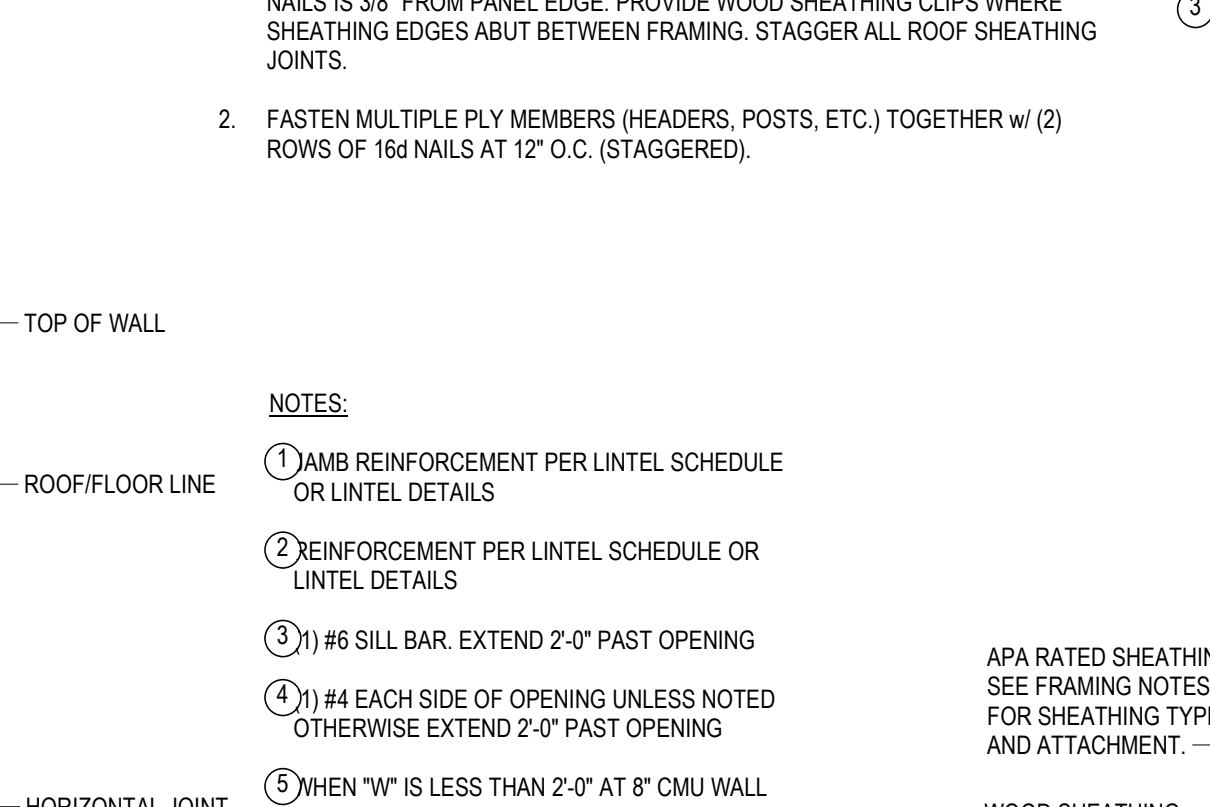
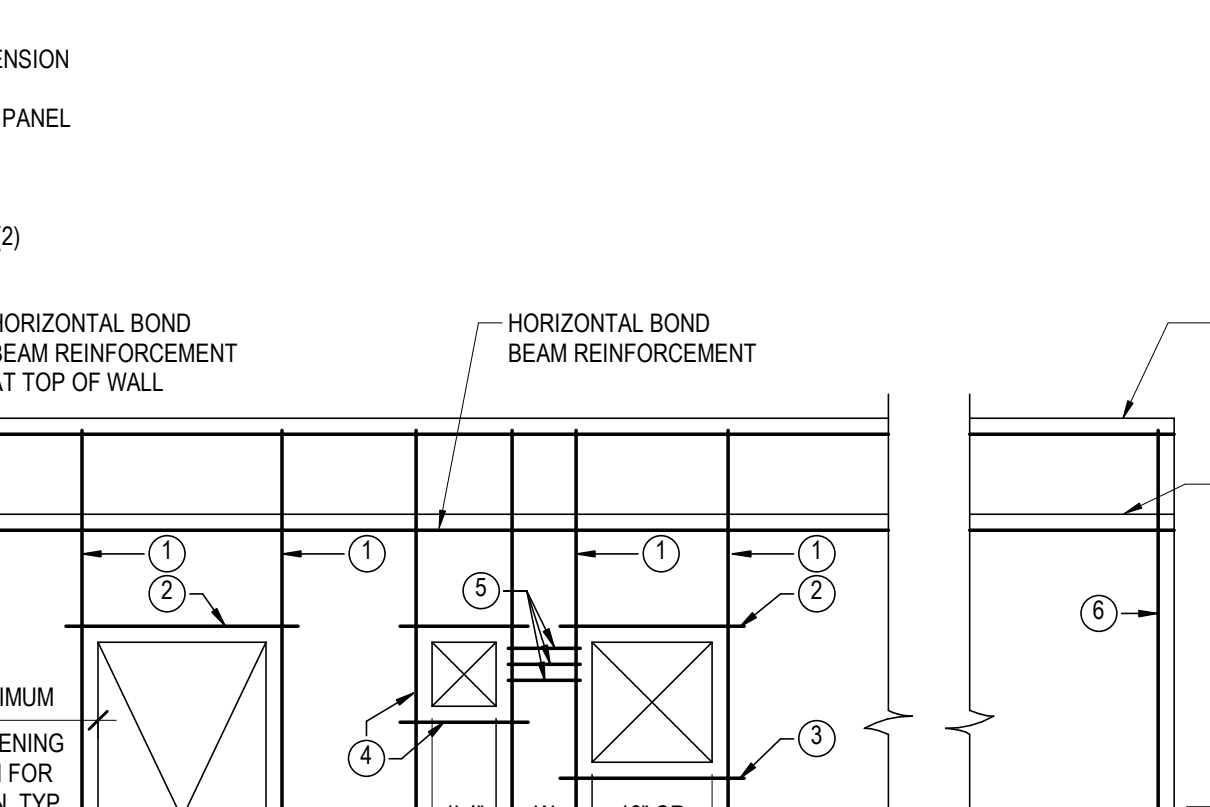
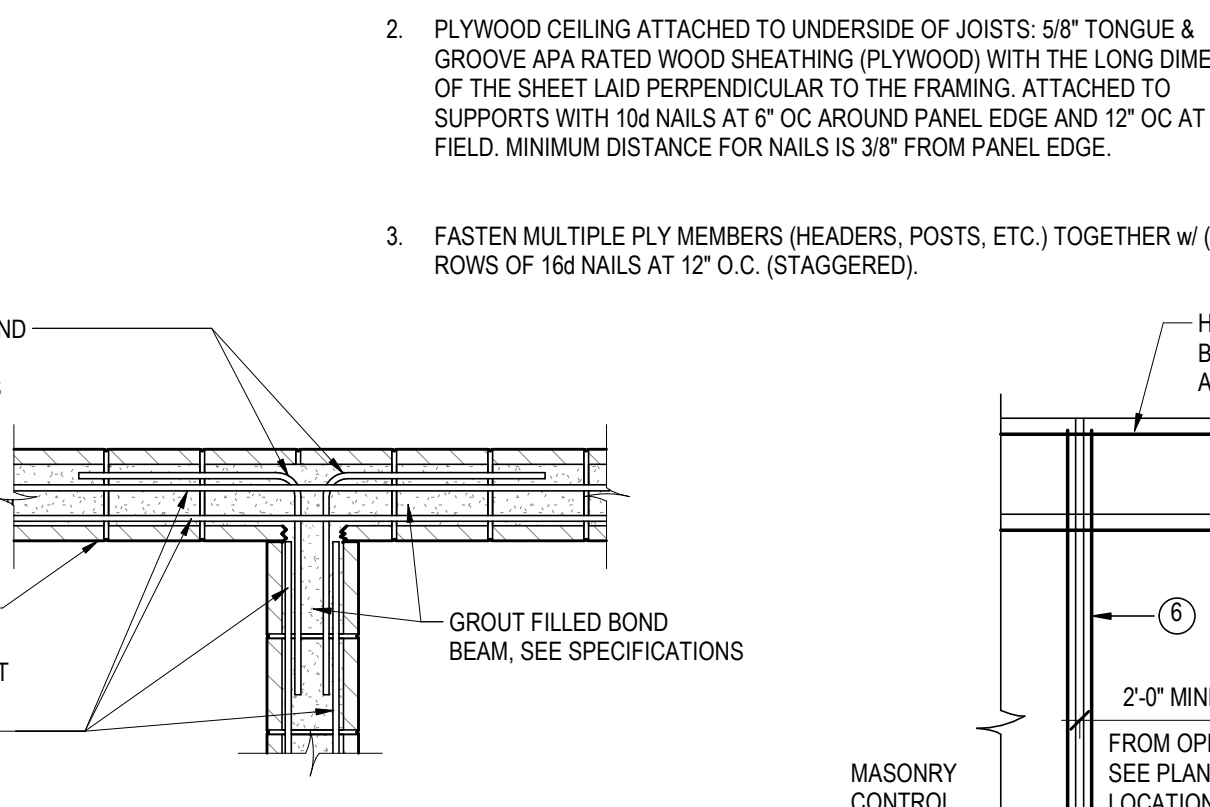
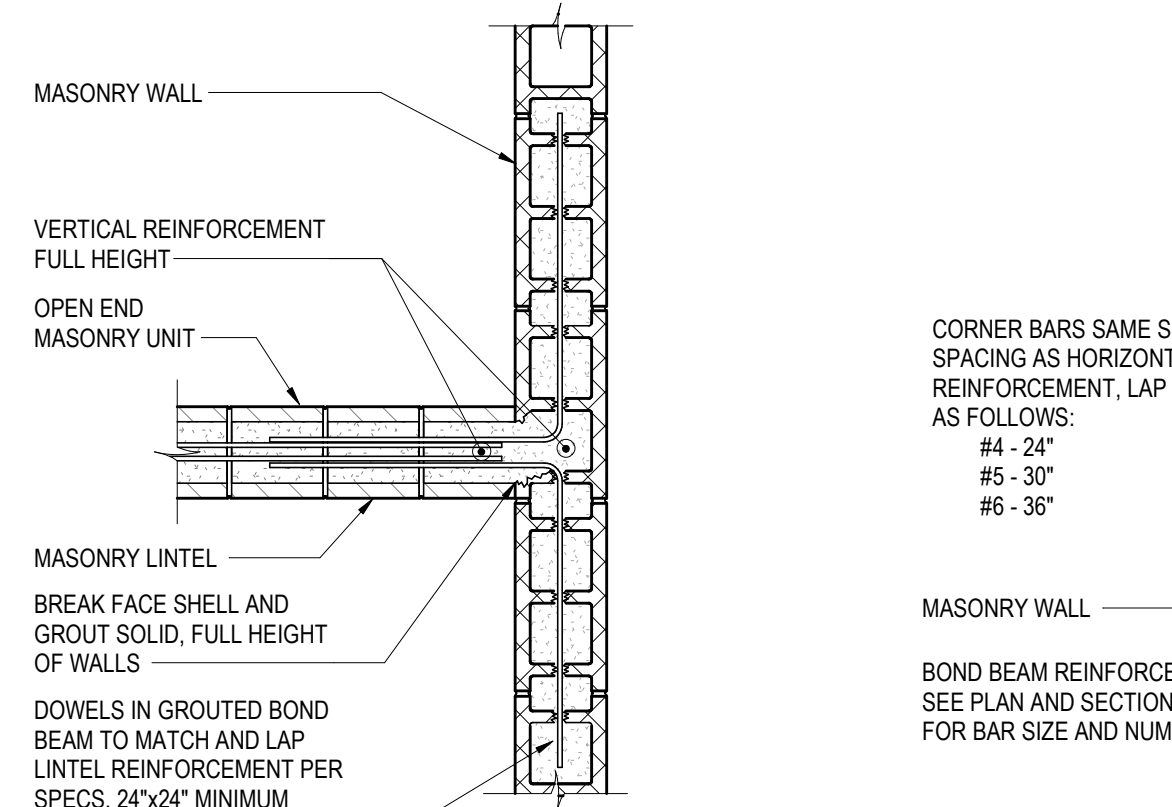
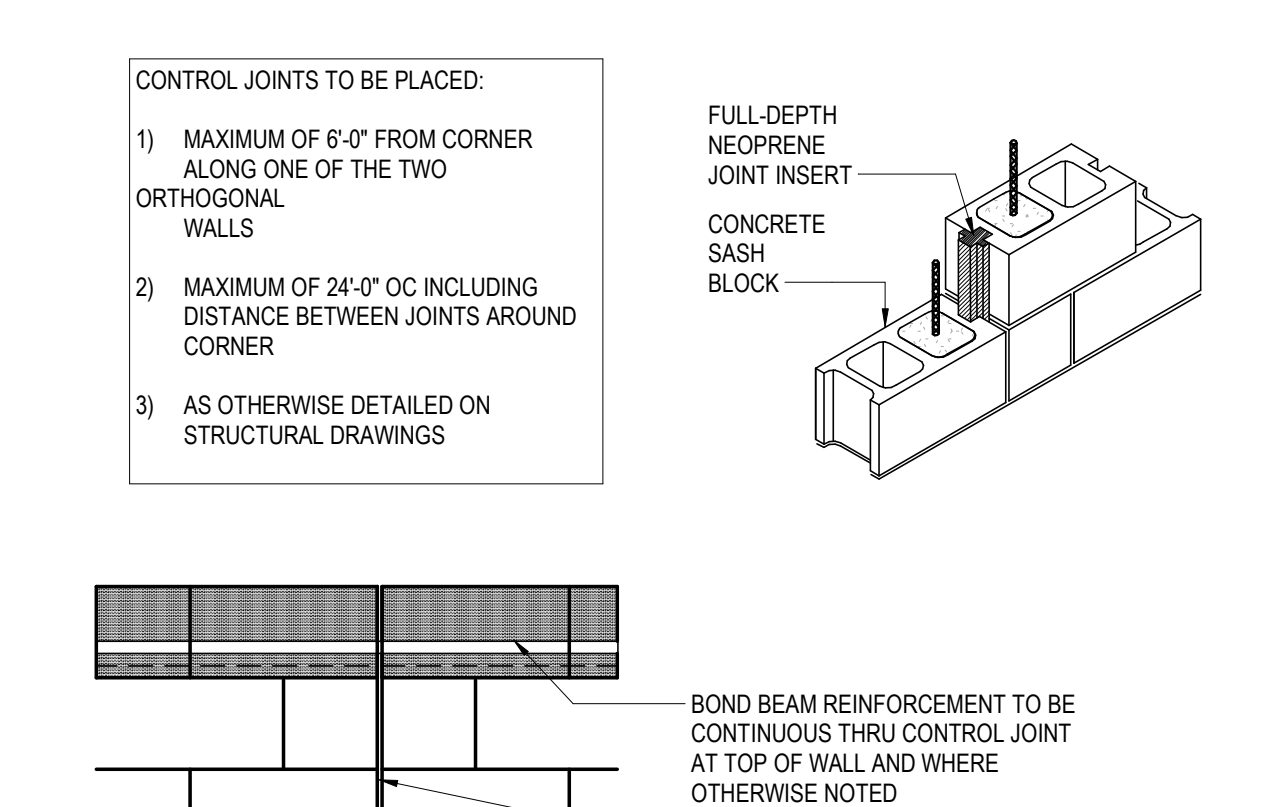
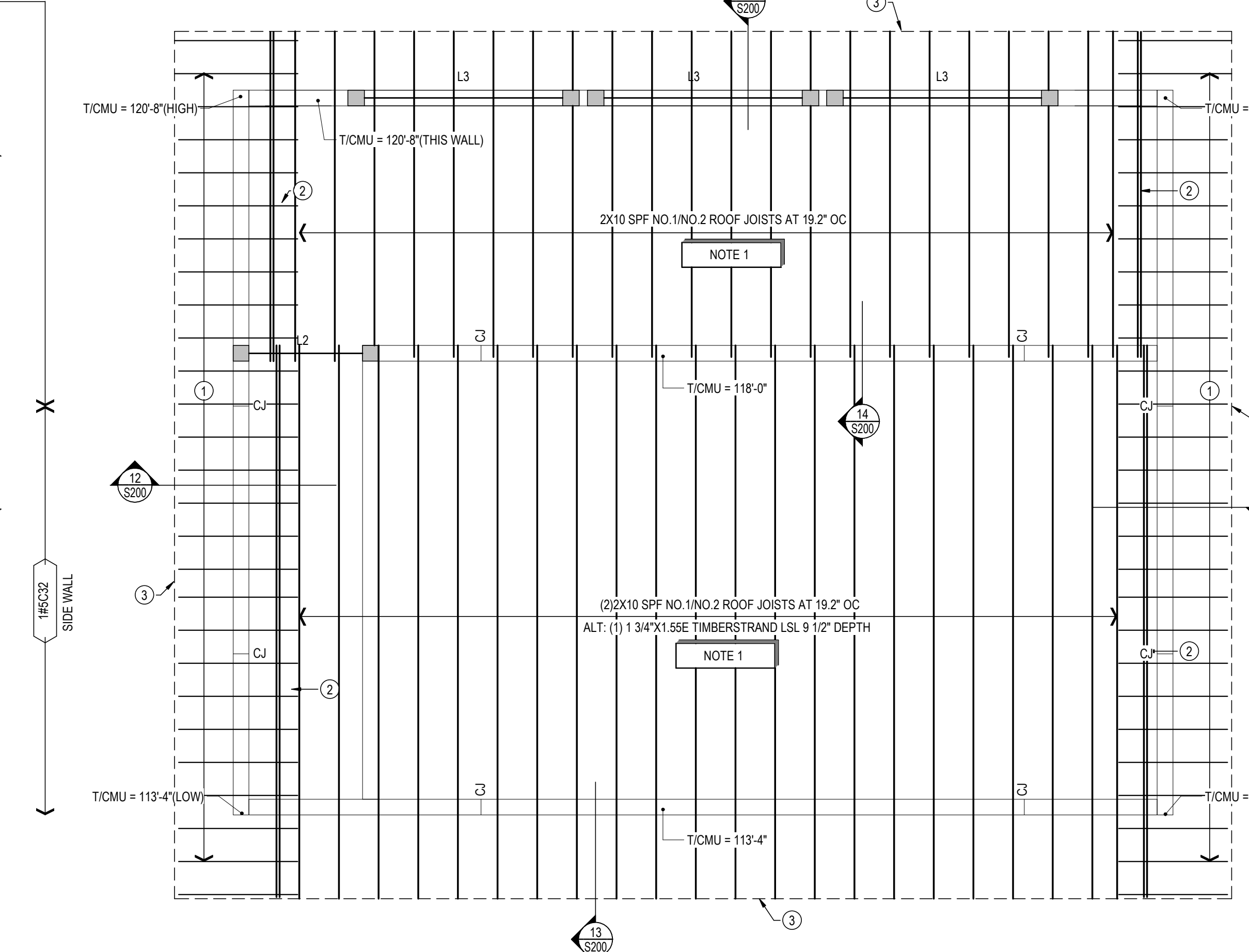
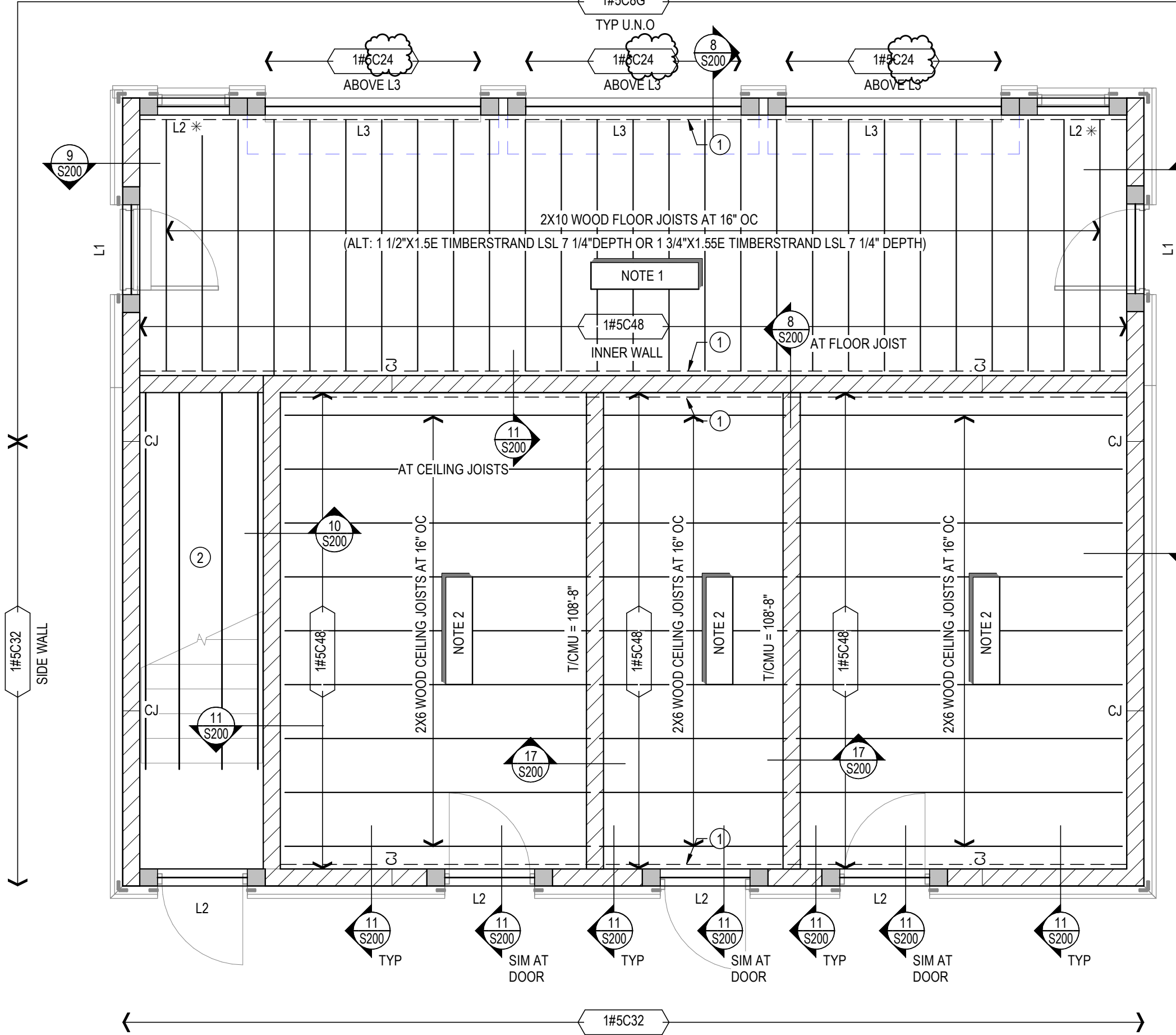
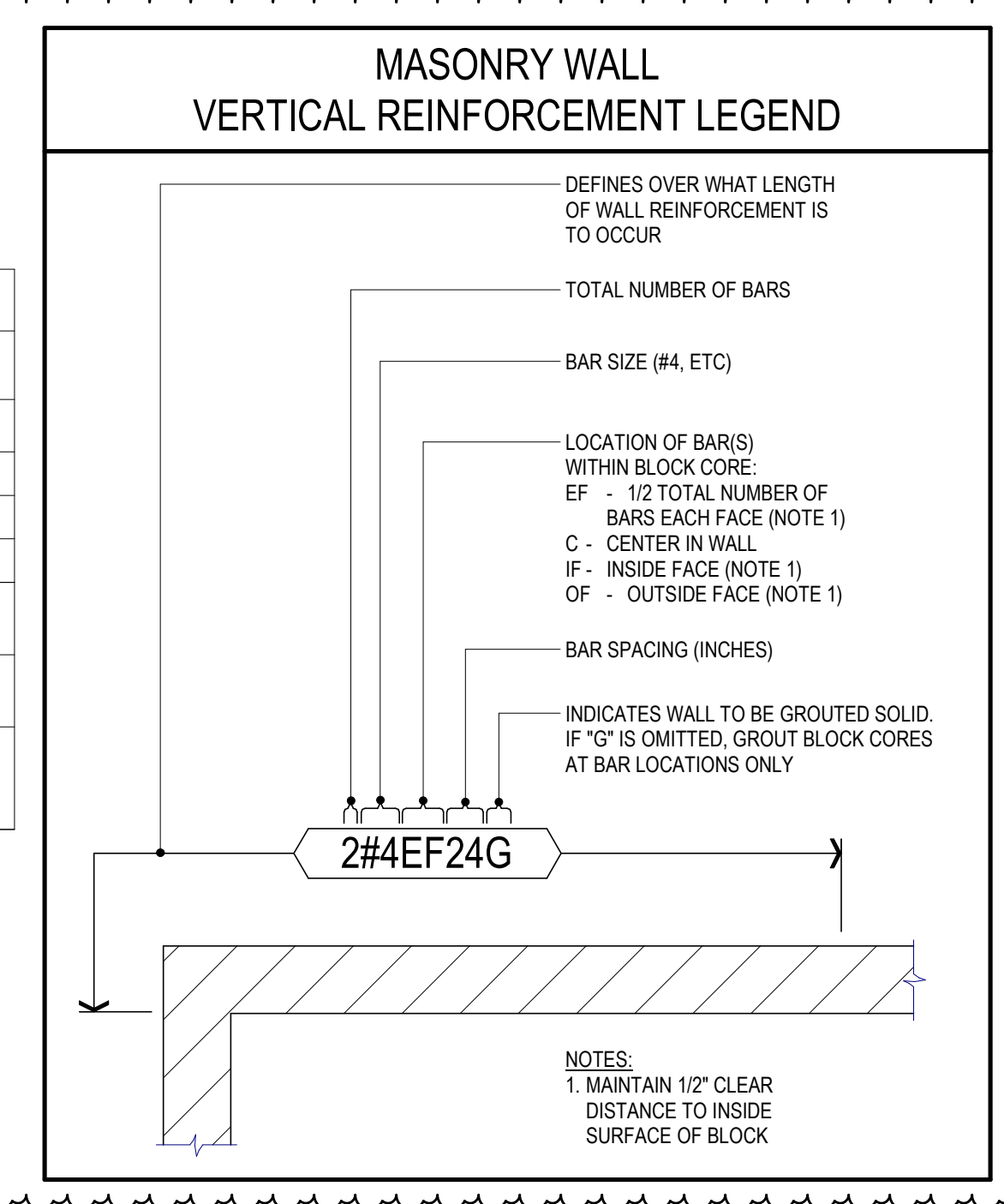
**END OF DOCUMENT 00 90 00**

LINTEL MARK	DESCRIPTION	SECTION	END BEARING PLATES	REMARKS
L1	8" WIDE X 8" HIGH BOND BEAM WITH (2) #5 BOTTOM BARS		N/A	1,2,3,4 * = CONTRACTOR MAY OPT TO USE L3 LINTELS HERE FOR CONVENIENCE DUE TO ADJACENT OPENINGS WITH LINTELS THAT SIZE
L2	8" WIDE X 16" HIGH BOND BEAM WITH (2) #5 BOTTOM BARS		N/A	1,2,3,4
L3	8" WIDE X 24" HIGH BOND BEAM WITH (2) #5 BOTTOM BARS		N/A	1,2,3,4

- NOTES:
- PROVIDE (1) #5 VERTICAL BAR IN GROUTED CELL EACH END OF LINTEL, TYP.
  - TYPICAL NOTES THAT APPLY UNLESS NOTED OTHERWISE.
  - PROVIDE MINIMUM 8" BEARING AT EACH END OF LINTEL.
  - CENTER LINTELS IN WALL UNLESS NOTED OTHERWISE.
  - WIDTH OF BOND BEAM TO MATCH WIDTH OF WALL.
  - PROVIDE 1" BOTTOM CLEAR COVER.

WALL THICKNESS	CLEAR MASONRY OPENING WIDTH	SECTION
ALL	AT FIRE EXTINGUISHER CABINETS AND DRINKING FOUNDATIONS	1/4" PL
4"	UP TO 4'-0"	L5 1/2x3 1/2x5/16 (LLV)
4"	UP TO 8'-0"	L6x4x3/8 (LLV)
4"	UP TO 12'-0"	L7x4x3/8 (LLV)
8"	UP TO 4'-0"	8" HIGH X 8" WIDE BOND BEAM w/ (2) #5 X CONT
8"	UP TO 8'-0"	16" HIGH X 8" WIDE BOND BEAM w/ (2) #5 X CONT
8"	UP TO 12'-0"	24" HIGH X 8" WIDE BOND BEAM w/ (2) #5 X CONT

- LINTEL NOTES:
- LINTELS CALLED OUT IN THIS SCHEDULE ARE FOR NON-LOAD BEARING MASONRY WALLS AND FOR LOAD BEARING WALLS WHERE LOAD IS INTRODUCED ABOVE THE LINTEL AT A DISTANCE GREATER THAN THE LINTEL SPAN.
  - PROVIDE MINIMUM 8" BEARING AT EACH END OF LINTEL.
  - NO LINTELS REQUIRED FOR 4" AND 8" NON-LOAD BEARING MASONRY WALLS WHERE GROUTED HOLLOW METAL FRAMES HAVE A HEADSPAN OF 4'-0" OR LESS.
  - PROVIDE THESE LINTELS WHERE OTHER LINTELS ARE NOT SPECIFICALLY DETAILED.
  - GROUT BLOCK CORES SOLID MINIMUM (3) COURSES BELOW LINTEL BEARING.



**NOTE:**

1/4"x7"x7" PLATE WASHER, TYPICAL ALL TITEN HD ANCHORS INTO DOUBLE OR TRIPLE TOP PLATES

ALT: USE SIMPSON LTA2 ANCHORS WITH (1) ADDITIONAL #5 REBAR IN BOND BEAM WHERE FRAMING IS PERPENDICULAR TO THE WALL

HSR Project Number:  
**HSR # 22002**

Project Date:  
**MAY 2022**

Drawn By:  
**raSmith**

Key Plan:

Revisions:

No.	Description	Date
ADD1	ADD #1	6/30/2022

Graphic Scale:  
**VARIES**

Last Update:  
**6/29/2022 2:13:14 PM**